

Colonization of wetland habitat: Succession in restored habitats

**Merel Soons and Jos Verhoeven
Utrecht University**

**Dennis Whigham
Smithsonian Environmental Research
Center**

Mary Leck (Rider University)

Dispersal potential of a tidal river wetlands: Colonization of a created tidal freshwater marsh on the Delaware River, USA

Metthea Yepsen (University of Maryland)

**Andrew Baldwin (U. MD), Elizas McFarland , Marina LaForgia and Dennis Whigham
(Smithsonian Environmental Research Center)**

Vegetation patterns in prior converted, restored, and reference wetlands in the U.S. Mid-Atlantic Coastal Plain

Karin Kettenring (Utah State University)

Eric Hazelton (Utah State), Sally Gallagher (U. Wisconsin and SERC), Heather Baron (Oregon State University and SERC), Melissa McCormick and Dennis Whigham (SERC)

Reproduction, dispersal, emergence, and establishment of *Phragmites australis* in disturbance in Chesapeake Bay tidal wetlands

Susan Galatowitsch (University of Minnesota)

Barriers to colonization of sedge-dominated wetlands

- **Created:** no historical wetland at restoration site
- **Restored:** degraded (altered) wetland at site
- **Enhanced:** natural wetland present but dominated by invasive species

Prior converted wetland Eastern Shore, MD



Restored wetland Eastern Shore, MD

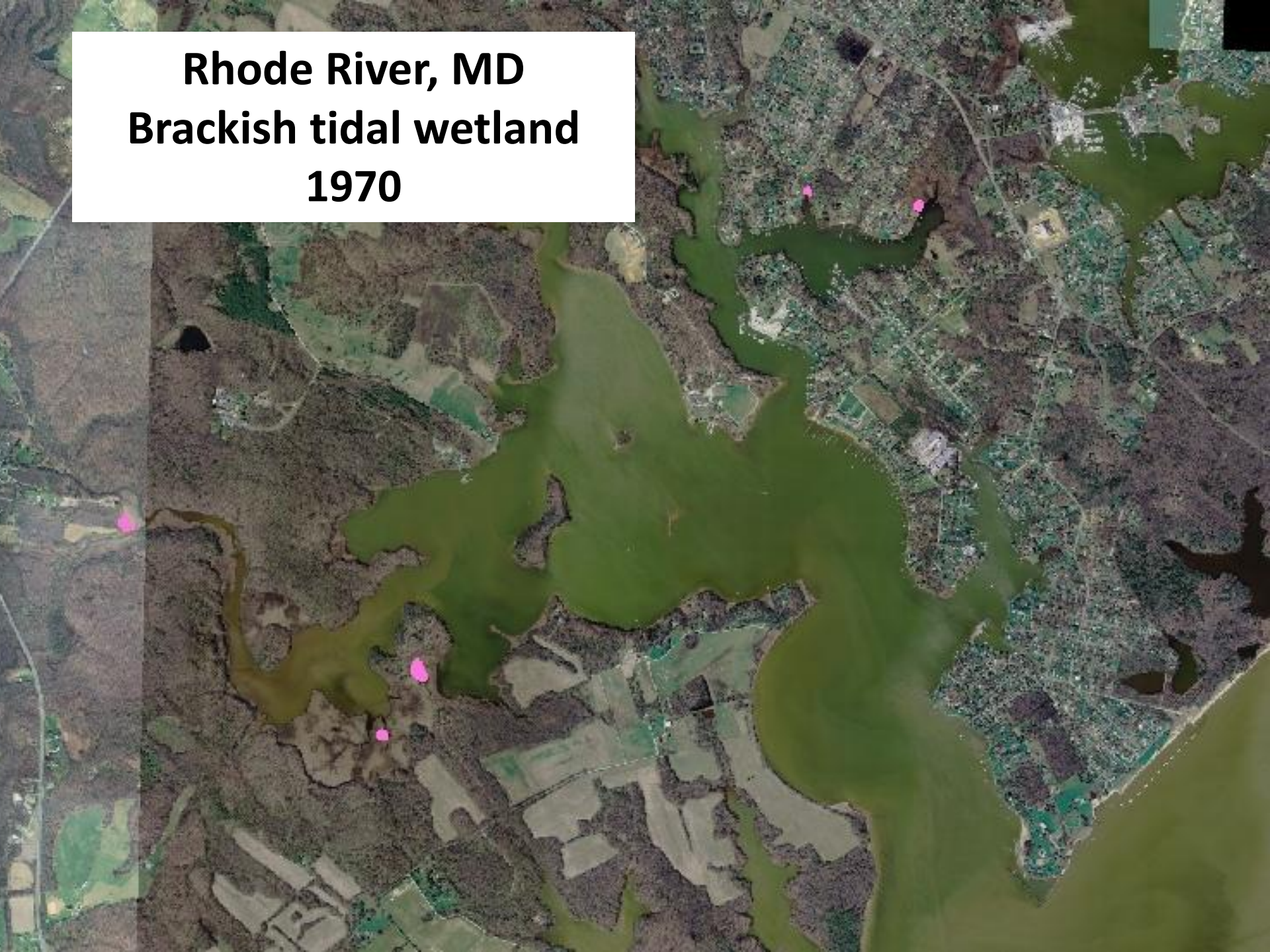


Tidal freshwater wetland Patuxent River , MD

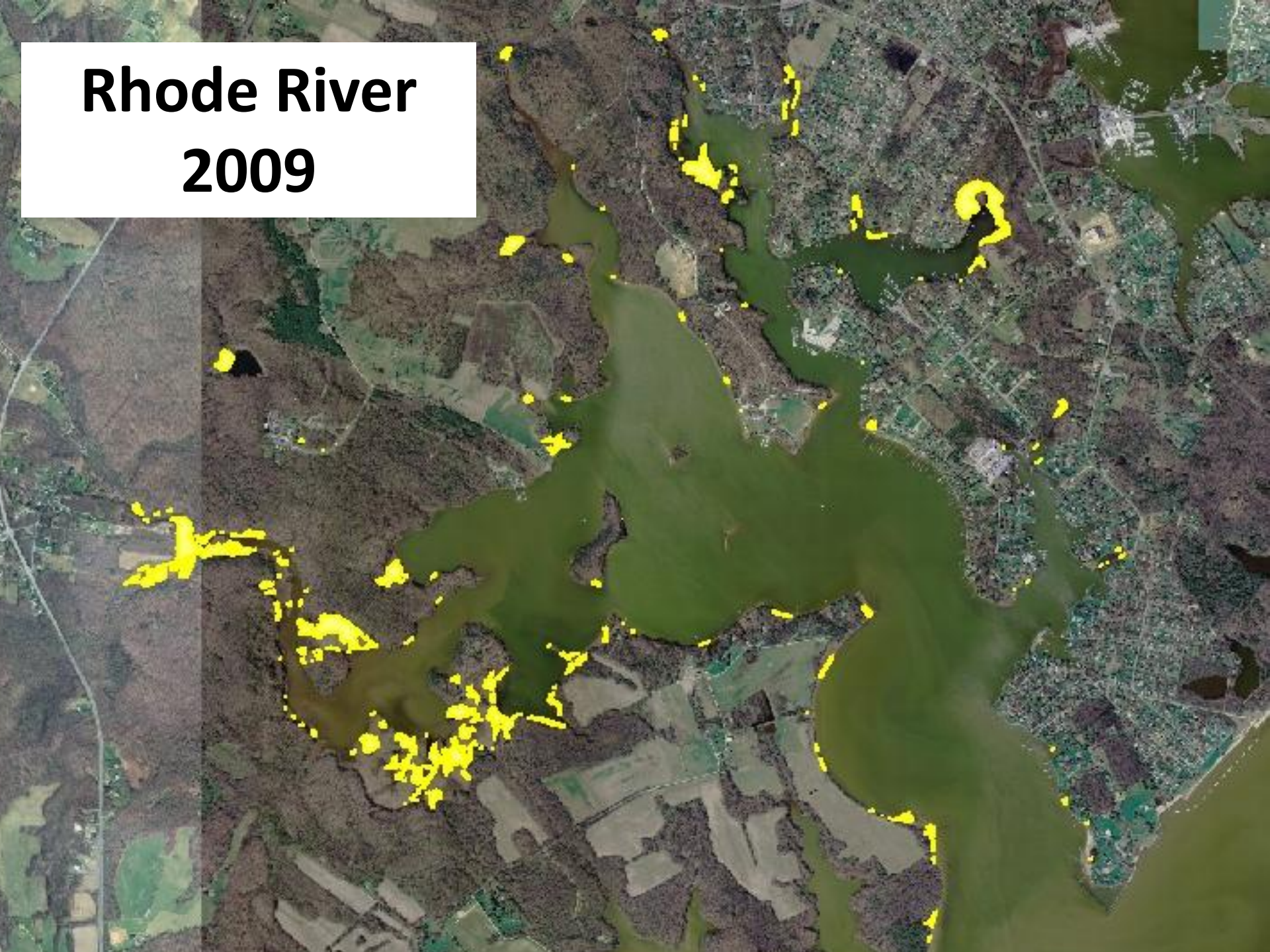




Rhode River, MD
Brackish tidal wetland
1970



Rhode River 2009





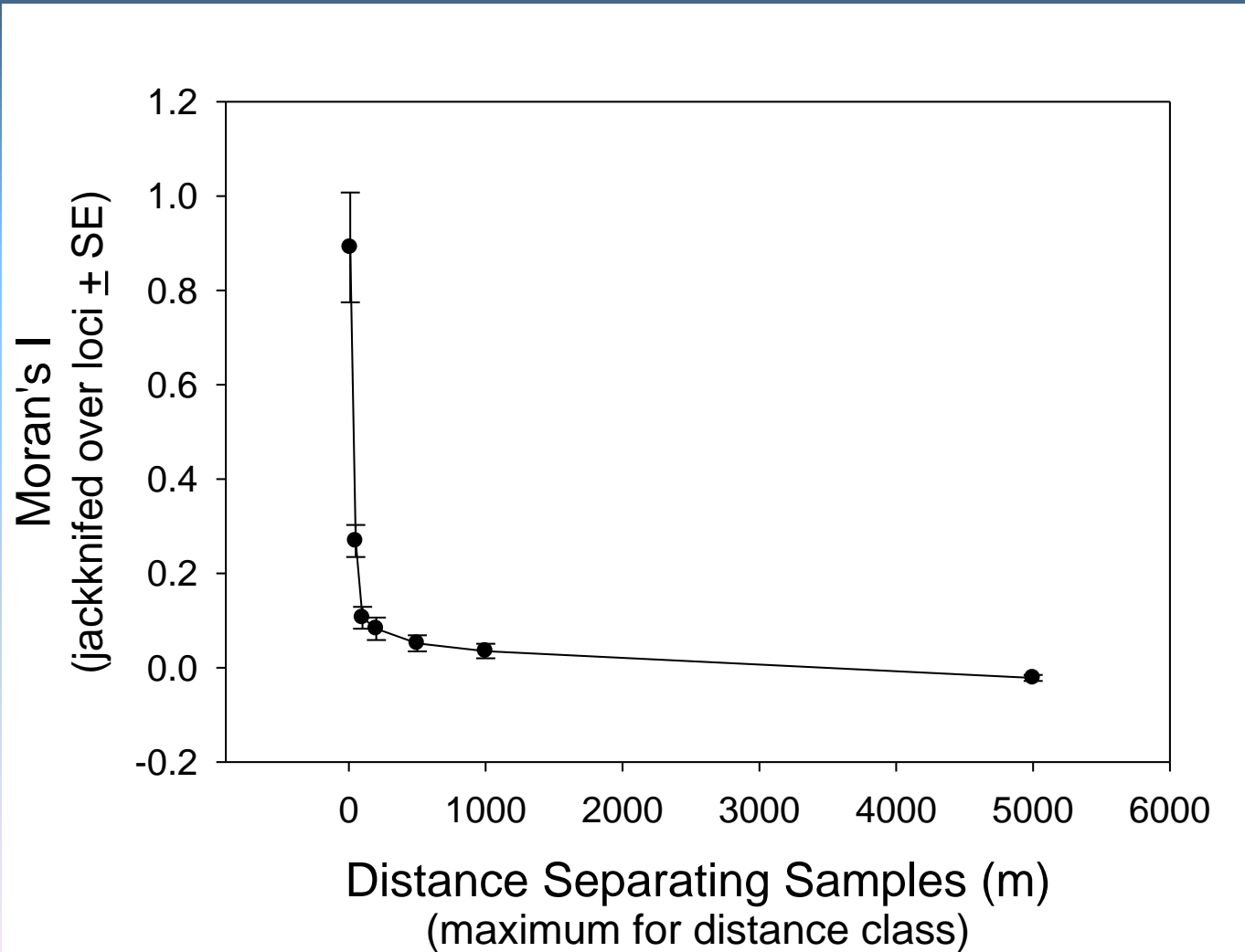
Does the amount of organic matter present at the time of restoration influence vegetation patterns, including colonization?



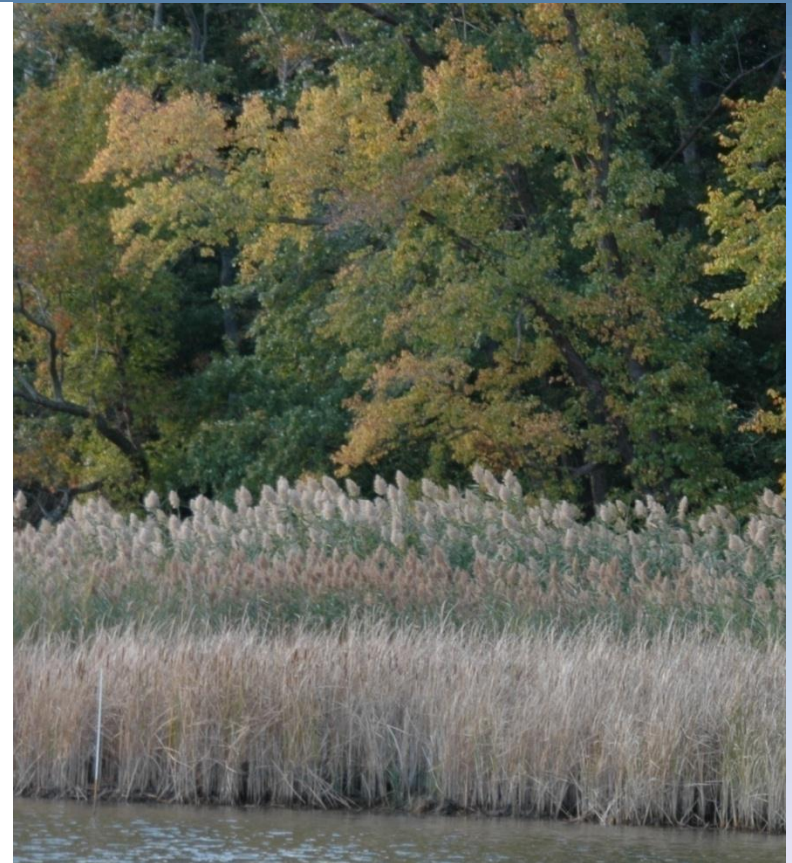
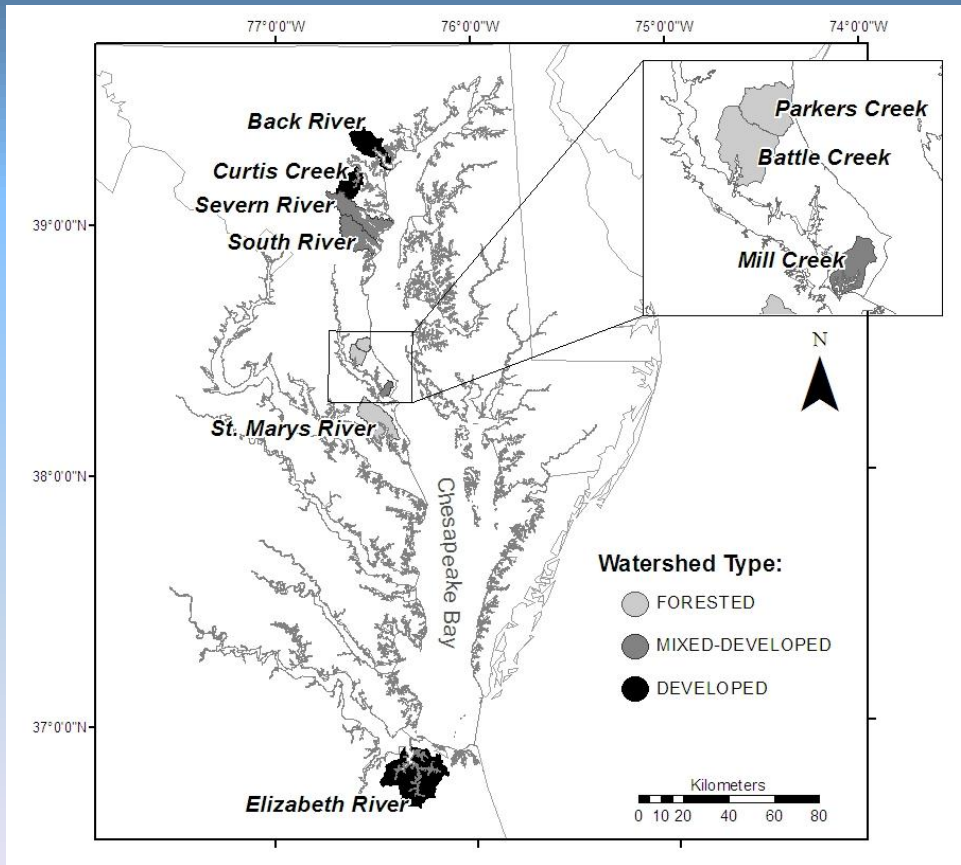
Is a seed bank present at the time of the restoration?



Dispersal of seeds and vegetative propagules



Substantial genetic variation within and among patches: 91% of patches had >1 genotype





Platanthera lacera

Ragged fringed orchid



Photo courtesy of A.L. Gibson

Spiranthes ovalis var. *erostellata*

October Ladies' Tresses

Mary Leck (Rider University)

Dispersal potential of a tidal river wetlands: Colonization of a created tidal freshwater marsh on the Delaware River, USA

Metthea Yepsen (University of Maryland)

Andrew Baldwin (U. MD), Elizas McFarland , Marina LaForgia and Dennis Whigham (Smithsonian Environmental Research Center)

Vegetation patterns in prior converted, restored, and reference wetlands in the U.S. Mid-Atlantic Coastal Plain

Karin Kettenring (Utah State University)

Eric Hazelton (Utah State), Sally Gallagher (U. Wisconsin and SERC), Heather Baron (Oregon State University and SERC), Melissa McCormick and Dennis Whigham (SERC)

Reproduction, dispersal, emergence, and establishment of *Phragmites australis* in disturbance in Chesapeake Bay tidal wetlands

Susan Galatowitsch (University of Minnesota)

Barriers to colonization of sedge-dominated wetlands